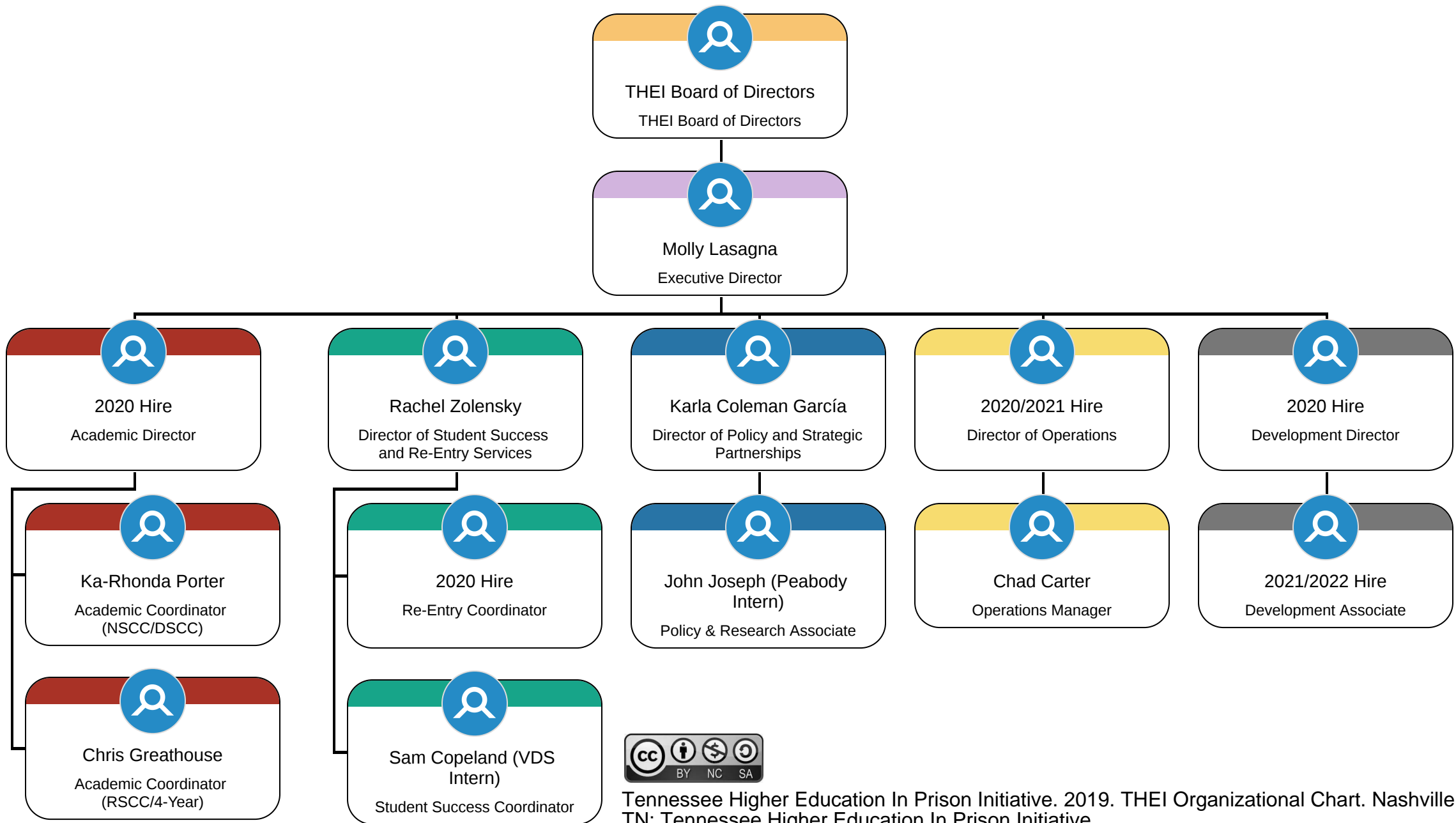


This document was submitted to the 2020 Annual Survey of Higher Education in Prison for inclusion in the National Directory of Higher Education in Prison Programs (<https://www.higheredinprison.org/national-directory>). The document was created by and remains under the sole ownership of the individual higher education in prison program. Further, the document was not edited, modified or otherwise altered by the Research Collaborative on Higher Education in Prison at the University of Utah, the Goldman School of Public Policy, University of California, Berkeley and/or the Alliance for Higher Education in Prison.

To learn more about the Higher Education in Prison Landscape Project, visit:  
<https://www.higheredinprison.org/higher-education-in-prison-landscape-project>



The Alliance for Higher Education subscribes to the Creative Commons Attribution: NonCommercial-ShareAlike (CC BY-NC-SA). All materials shared in the National Directory of Higher Education in Prison Programs will follow this license. This copyright licensing allows others to remix, adapt, and build upon work for non-commercial purposes, as long as they credit and license their new creations under the identical terms.



Tennessee Higher Education In Prison Initiative. 2019. THEI Organizational Chart. Nashville, TN: Tennessee Higher Education In Prison Initiative.